



REAL INNOVATION
LIMITLESS OPPORTUNITY
LEWISVILLE INDEPENDENT SCHOOL DISTRICT

LEWISVILLE ISD BOUNDARY ADJUSTMENT INFORMATIONAL MEETING

December 10, 2020



Face coverings required.
Please keep 6 ft apart.



Non-medical masks, bandanas, scarves,
and cloth can be used.

WELCOME

- Yellow question/comment cards are available. Please feel free to fill one out at any time. We have 90 minutes for this meeting and will do our best to answer every question
- Copies of the draft boundary map are available for viewing throughout the room

INTRODUCTIONS

- Kevin Rogers, Superintendent of Schools
- Members of the LISD Board of Trustees in attendance
- Lori Litchfield, Chief of Schools
- Jeffrey Kajs, Chief Exec. Dir. of Student Support Services

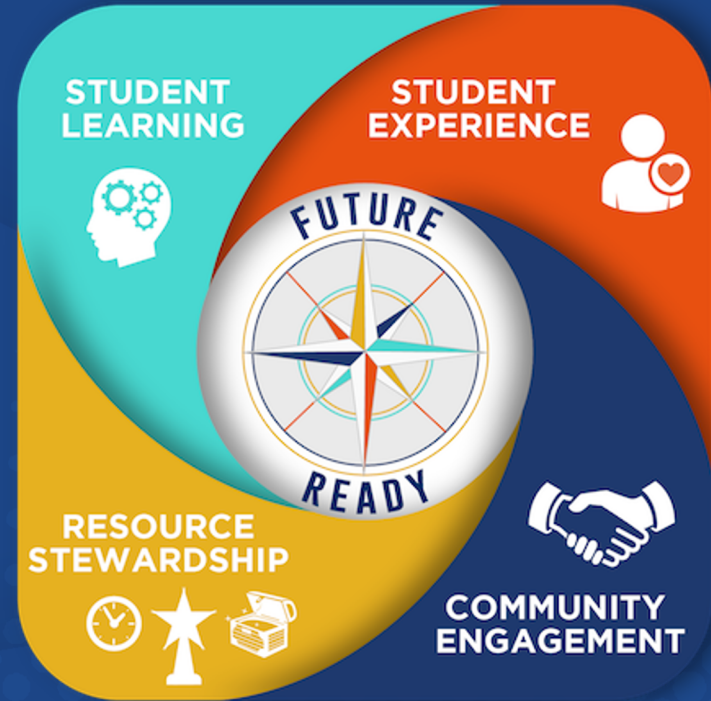
THANK YOU to TECC-East for hosting our meeting tonight.



**REAL INNOVATION
LIMITLESS OPPORTUNITY**
LEWISVILLE INDEPENDENT SCHOOL DISTRICT

FOUR CORNERSTONES

- STUDENT LEARNING
- STUDENT EXPERIENCE
- COMMUNITY ENGAGEMENT
- RESOURCE STEWARDSHIP



REAL INNOVATION. LIMITLESS OPPORTUNITY.
LEWISVILLE INDEPENDENT SCHOOL DISTRICT

GOALS FOR TODAY

- **Inform** – Our hope is you leave with an understanding of what is on the map, what the proposed boundary adjustments mean for you, and why LISD administration has made these recommendations to the Board of Trustees.
- **Engage** – If you have questions for Mr. Kajs, Dr. Rapp or Dr. Rogers about the process that goes into boundary adjustments, please use a question card, and we will work to provide a thorough answer.
- **Listen** – Information presented tonight is not final, and the Board of Trustees appreciates your input. While the Board will not answer questions today, they are here to listen to your feedback.

WHY ADJUST BOUNDARIES?

- Retiring of Stewart's Creek ES due to continued low enrollment while balancing enrollment at surrounding ES campuses
- Declining or flat enrollment in neighborhood schools.
- Growth of major roads, streets and tollways that create natural boundaries, i.e. “cleaning up” existing boundaries.
- Opening of new Elementary STEM campus on Josey Ln. for TCHS feeder

TIMELINE FOR BOUNDARY DECISIONS

December 2020

- December 3 - 10: Community information/input meetings
- December 7: Board Workshop Discussion Item

January 2020

- January 11 - probable Board Meeting Action Item

WHAT THE BOUNDARY ADJUSTMENTS MEAN FOR...

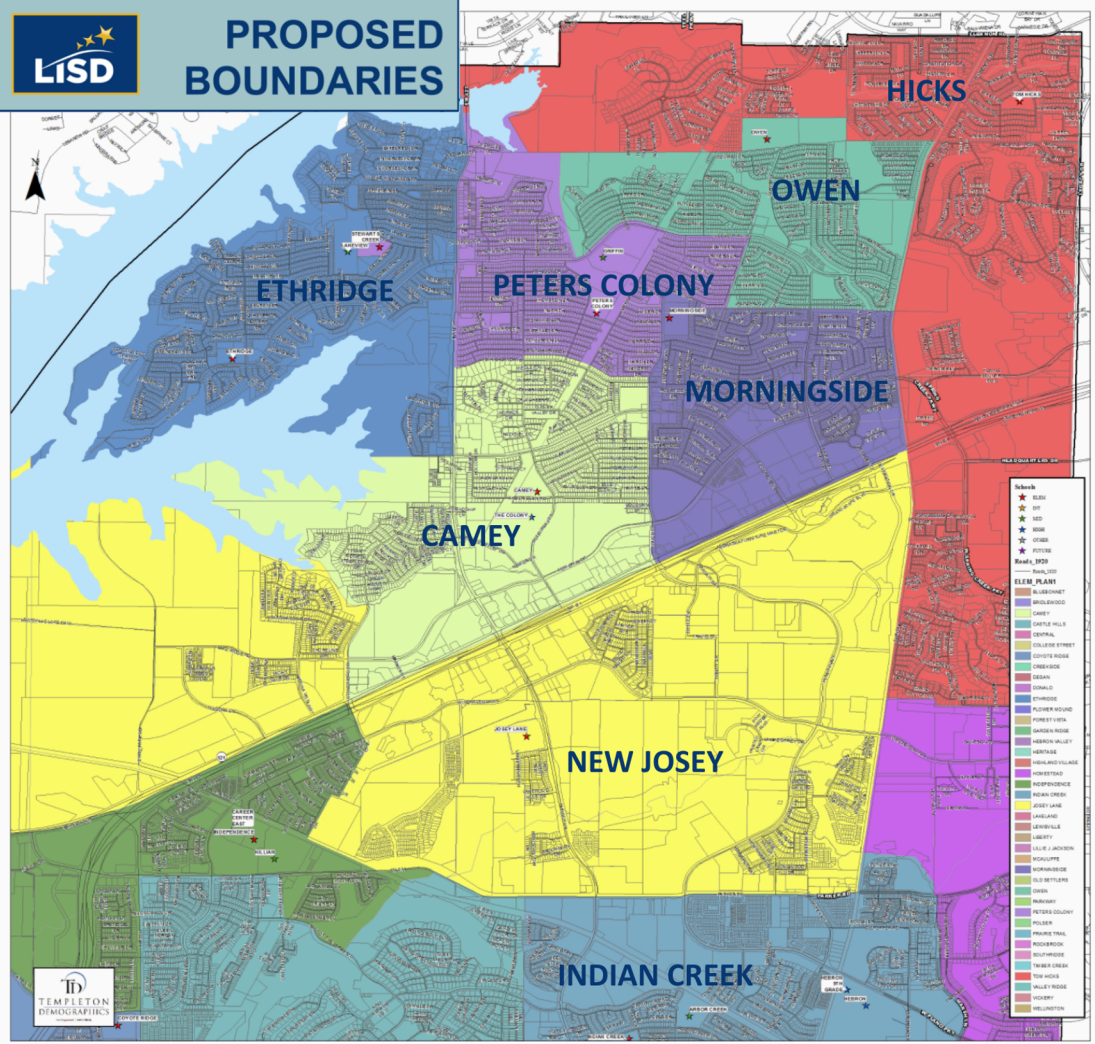
- **STUDENTS?** – Some students will have a new home campus next school year.
- **PROGRAMS & SERVICES?** – LISD and the Board of Trustees is committed to ensuring programs and services follow every student.
- **CURRICULUM?** – LISD uses a district-wide curriculum designed to challenge and engage every learner. The curriculum is the same at every school.
- **TRANSPORTATION?** – Transportation to new campuses will depend on the location and hazardous routes that exist.

HOW DID LISD CHOOSE THIS MAP?

- More than 6 months of planning to get here
- Partners with Templeton Demographics
 - Current enrollment
 - Future growth and development
 - Campus capacity
- New Elementary STEM Academy on Josey Lane
- Staying close to home/neighborhood schools

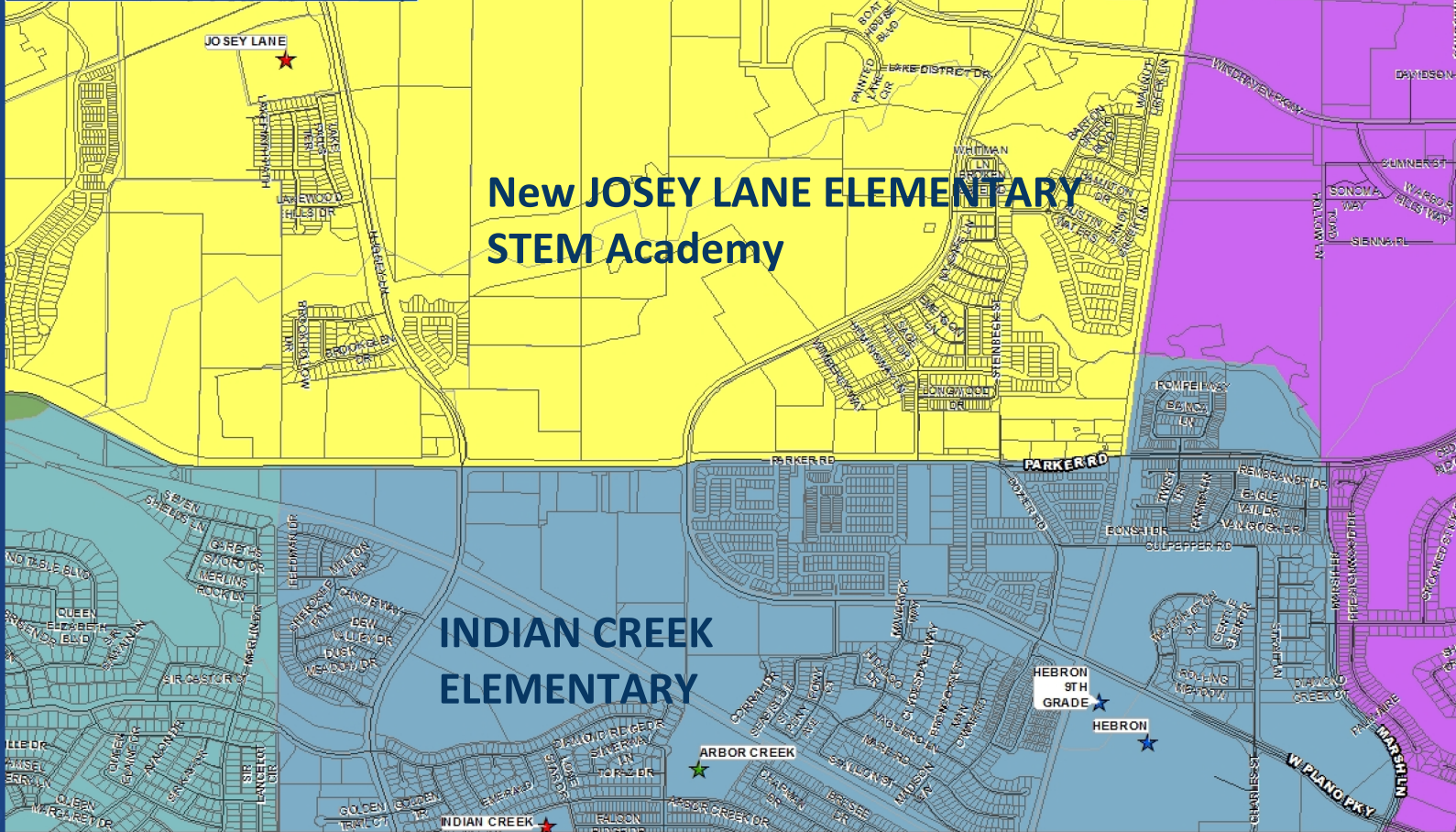


PROPOSED BOUNDARIES





PROPOSED BOUNDARIES



**New JOSEY LANE ELEMENTARY
STEM Academy**

**INDIAN CREEK
ELEMENTARY**

JOSEY LANE



INDIAN CREEK



HEBRON 9TH GRADE



HEBRON



FEEDER PATH

NEW JOSEY LANE ELEMENTARY
“Boot” section of map

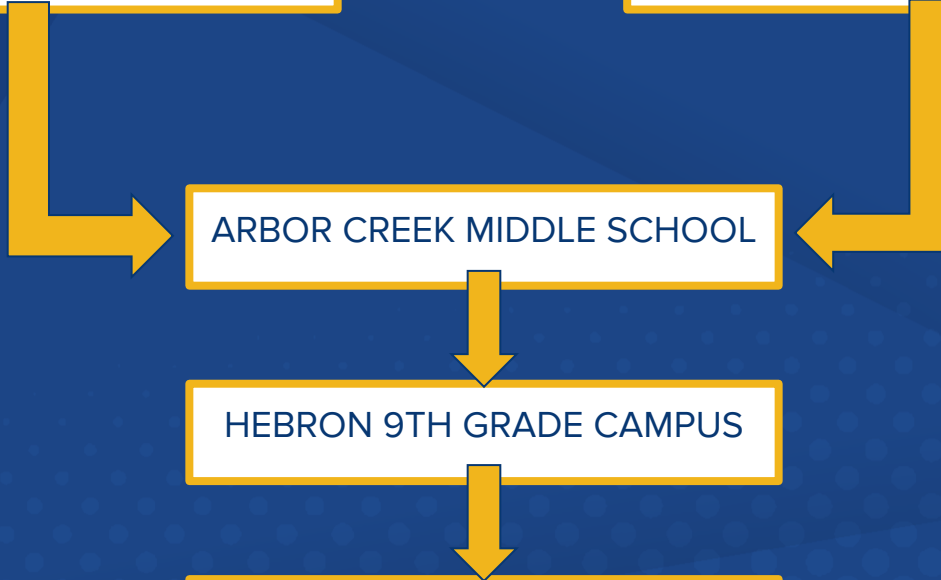
INDIAN CREEK ELEMENTARY
“Spur” section of map

*NOTE: Students zoned for HICKS in the “Boot” area that will be rezoned for new Josey Lane ES will be allowed to continue in Hebron HS feeder (grades 6-12)

ARBOR CREEK MIDDLE SCHOOL

HEBRON 9TH GRADE CAMPUS

HEBRON HIGH SCHOOL



ENROLLMENT PROJECTIONS

SCHOOL	Capacity	Current Enrollment	2021/22	2022/23
JOSEY LANE	754	N/A	367	445
INDIAN CREEK	673	533	562	560
ARBOR CREEK MIDDLE SCHOOL	945	866	859	856
HEBRON 9th	1,512	859	944	943
HEBRON HIGH SCHOOL	3,208	2,790	2,765	2,814

TRANSPORTATION

Texas Central School Bus | (469) 794-0152

If you are looking for information on your child's bus stop and pick-up/drop-off times, please visit the Transfinder site at the following link:

<https://www.infofinderi.com/ifi/?cid=NACLI3Y8SZXL6V&ppid=FORD4181>

5

Those students that are in the “Boot” and “Spur” location will continue to qualify for bus service if they continue to their newly assigned campus due to hazardous routes and possible distance from the new campus.



HAZARDOUS ROUTES

Hazardous routes are determined by Transportation, municipalities, and LISD.

- Routes can be permanent (major roads, railroads or other permanent barriers)
- Routes can be temporary (road construction or road repair)

FDB (LOCAL) - ADMISSIONS: INTRADISTRICT TRANSFERS AND CLASSROOM ASSIGNMENTS

CHANGES IN ATTENDANCE ZONE

When the Board approves changes to District attendance zone boundaries, students shall attend the schools specified; **however, a student attending an elementary school and entering grades 4 or 5**, or attending a middle school and entering grade 8, at the time of zone boundary changes shall be given the choice of attending the school to which he or she has been newly zoned or requesting a transfer to complete grade 5 or grade 8, respectively, at the original school. **Siblings of a student** wishing to stay at his or her original school, rather than move due to changes in attendance zone boundaries, shall be allowed to remain at the original school. If a student choosing to stay at the school has a sibling entering kindergarten, the sibling shall be guaranteed transfer to the school. **District transportation shall not be provided for such transfers.**

This is referred to as “Grandfather Clause.”

FDB (LOCAL) - ADMISSIONS: INTRADISTRICT TRANSFERS AND CLASSROOM ASSIGNMENTS

TRANSFER REQUESTS

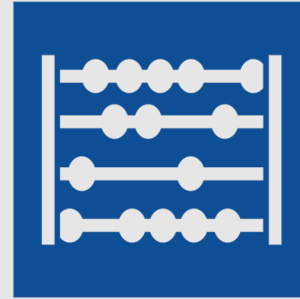
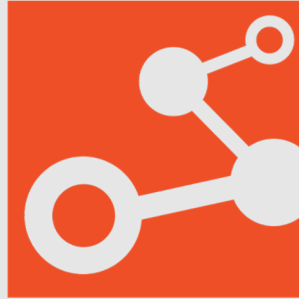
A student who wishes to attend a school other than as assigned for his or her attendance zone shall file an application for transfer with the Superintendent, in accordance with administrative procedures. Completed and signed applications for a transfer shall only be considered during the designated transfer period.

Transfer window opens January 25 - February 19

Visit this site for more information <https://www.lisd.net/Page/408>



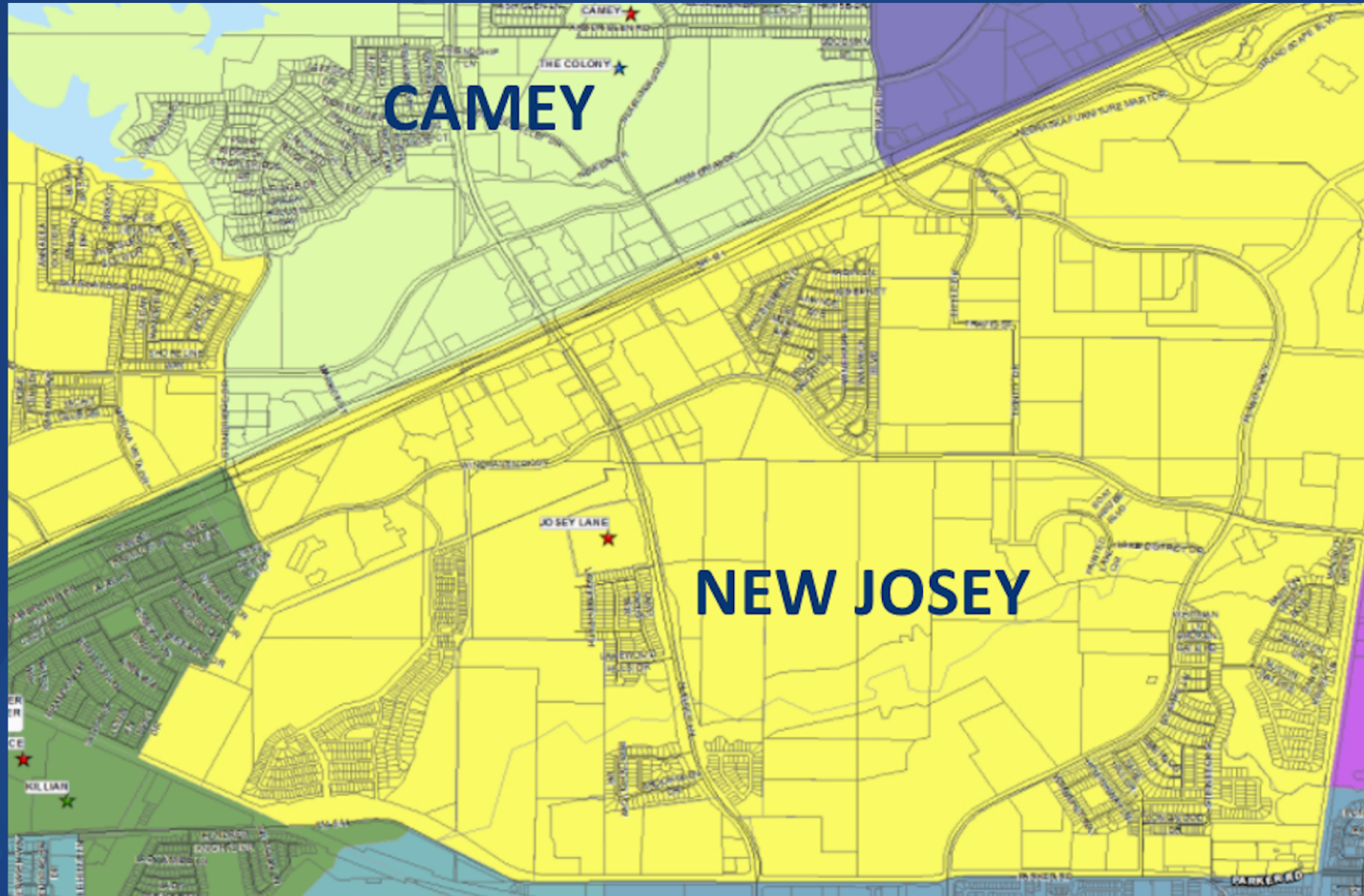
LISD STEM academy



LEWISVILLE INDEPENDENT SCHOOL DISTRICT

New STEM Academy on Josey Lane

New STEM Academy on Josey Lane









A Bb Cc Dd Ee Ff Gg
h Ii Jj Kk Ll Mm
n Oo Pp Qq Rr Ss
t Uu Vv Ww Xx Yy Zz

SCHOOL RULES



QUESTIONS/COMMENTS?

Now, we will address any QUESTIONS/COMMENTS submitted on yellow cards **(please turn in if you haven't yet)** to the best of our ability.

NOTE: all questions/comments will be posted on our website

<https://www.lisd.net/boundaries>

Jeffrey Kajs
Chief Exec. Dir. Student Support Services
kajsj@lisd.net
469-948-2004